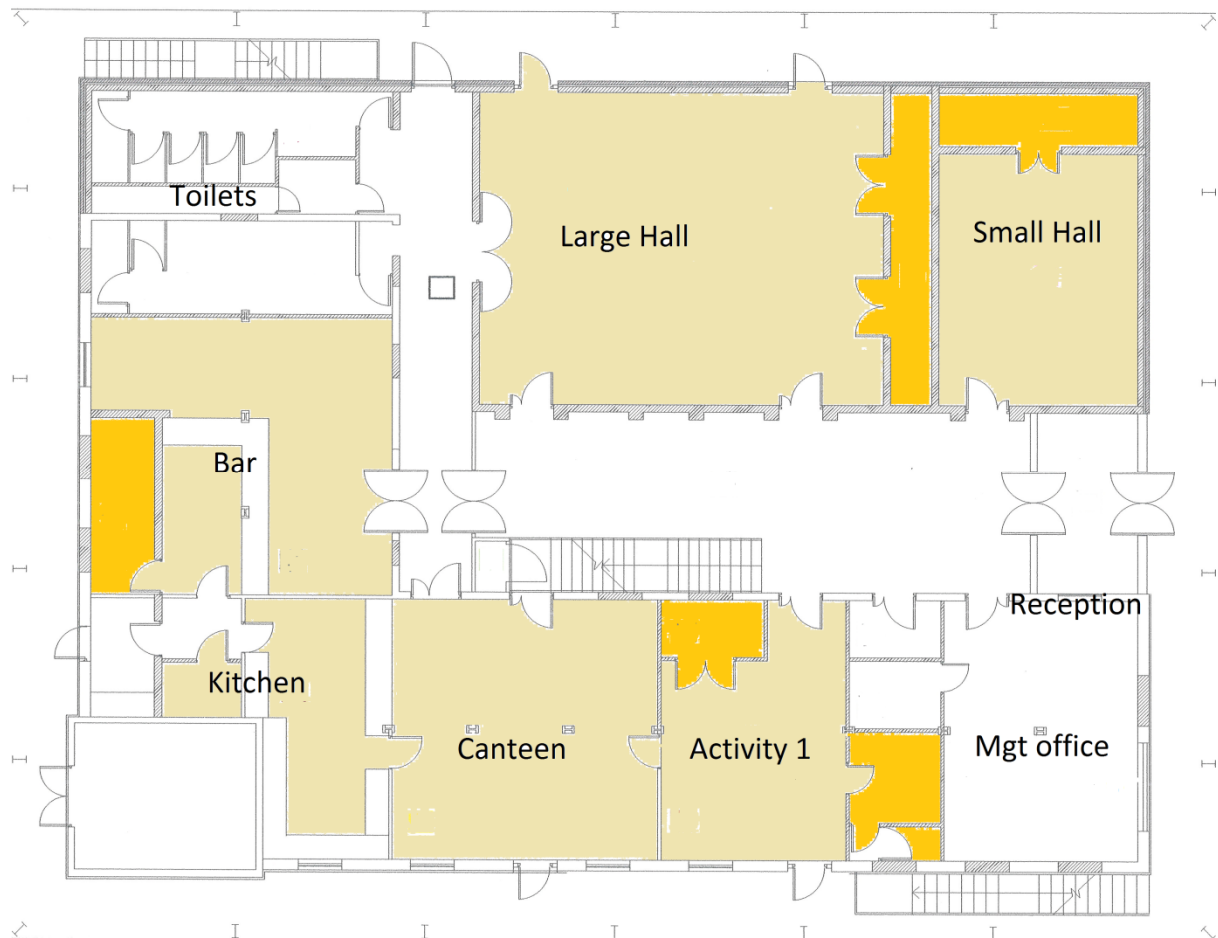


Ground floor plan



- **Small Hall** – high ceiling hall suitable for a variety of activities, maximum seated capacity, theatre style is 50.
- **Large Hall** – high ceiling hall suitable for a variety of activities, maximum seated capacity, theatre style is 100.
- **Bar** – functioning bar and seating area, can be used as a bar or as additional activity space, maximum seated capacity is 40.
- **Kitchen** – Basic but fully functioning kitchen
- **Canteen** – Café area linked to the kitchen, can be used as a bar or as additional activity space, maximum seated capacity is 50.
- **Activity room 1** – snug project activity space/meeting room
- **Storage** - there are a range of storage options that can be hired to facilitate activity delivery. These are marked on the plans with dark orange.